

# Rextorm

## PM - 521

10.1" Fully Rugged Windows Tablet

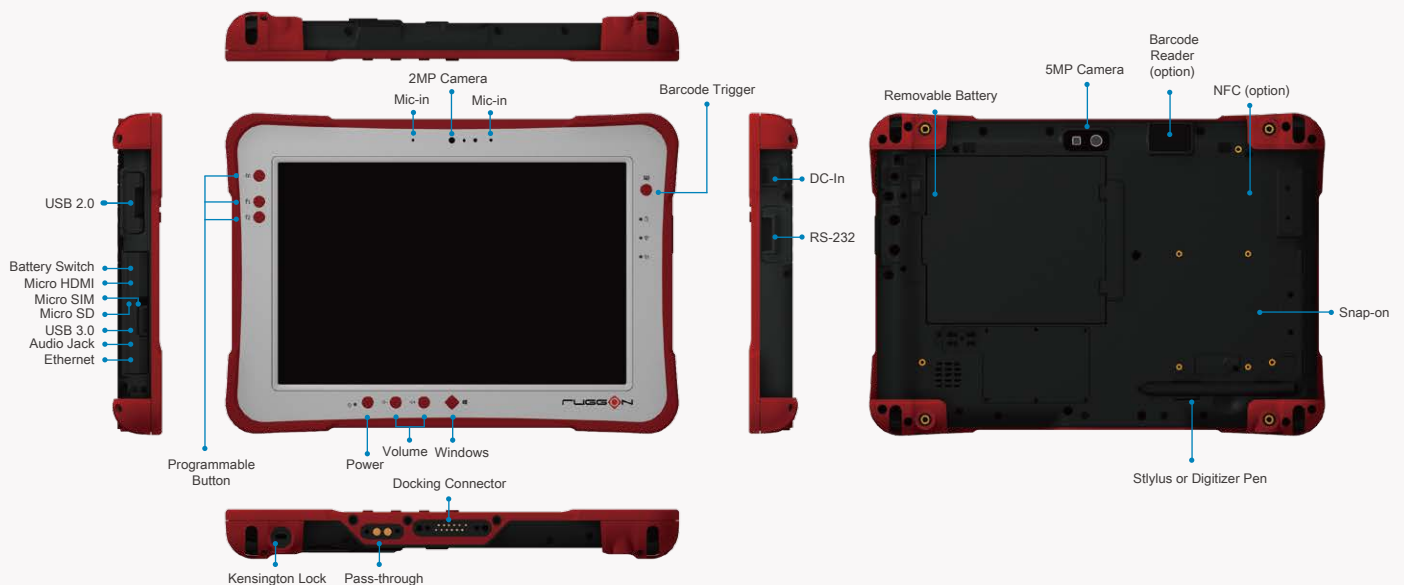


### Performance & Battery Life, Perfectly Balanced



- ◆ Intel® Atom™ processor E3827 1.75GHz
- ◆ IP65, MIL-STD-810G, 5 feet drop resistance
- ◆ 1000 nits sunlight readable display
- ◆ Capacitive multi-touch supports glove touch, water rejection, palm rejection, 2mm hard tip stylus
- ◆ Optional Janus USB Ignition Key, Phoenix SecureWipe
- ◆ GNSS, Wi-Fi, Bluetooth, optional 4G LTE
- ◆ Hot swappable battery design
- ◆ Wide expansion design for data capture
- ◆ Dual pass-through connector for WLAN, GNSS, WWAN

## I/O Diagram



# Specifications

## Operating System

- Windows 10 IoT Enterprise 2015 LTSB for Tablets
- Windows Embedded 8.1 Industry 64-bit
- Windows Embedded Standard 8 64-bit
- Windows 7 Professional 64-bit
- Windows Embedded Standard 7 64-bit
- Android 4.4 (by request)

## CPU

- Intel® Atom™ E3827 processor 1.75GHz

## Storage & Memory

- 128GB mSATA SSD, expandable to 256GB
- 32GB mSATA SSD (PM-521 Android only)
- 4GB DDR3L (8GB by request)

## Display

- 10.1-inch 1920 x 1200 WUXGA; 1000 nits sunlight readable
- 10-point capacitive touch supports glove touch, water rejection, palm rejection, 2mm hard tip stylus
- Gorilla Glass3                      ■ Digitizer by request

## Communications

- Wi-Fi 802.11 a/b/g/n/ac                      ■ Bluetooth V4.0 + EDR
- Optional 4G LTE                                      ■ GNSS (GPS / Glonass / BeiDou)
- Optional built-in NFC

## Camera

- 2MP front camera
- 5MP rear camera, AF with LED flash

## Expansion

- Optional built-in 2D barcode reader
- Optional NFC + Smart Card reader(CAC) 2-in-1 module

## Security

- Optional Janus USB Ignition Key, Phoenix SecureWipe
- TPM 1.2

## Control Button

- Programmable button x 3                      ■ Barcode trigger x 1
- Power, volume, Windows button

## Sensor

- Gyroscope, G-sensor, E-compass, light sensor

## Power Adapter

- AC 100V~240V, 50~60Hz Input; 19VDC@3.42A, 65W

## Battery

- Standard : 4500 mAh, 10.8V, hot swappable  
Battery operation\* : 6 hours
- Extended : 9000mAh, 10.8V, hot swappable (option)  
Battery operation\* : 12 hours

\*The listed battery life is based on MobileMark 2012® media mode testing.

## I/O Interface

- USB 3.0 type A x 1, USB 2.0 type A x 1
- Gigabit ethernet (RJ45 ) x 1
- RS-232 x 1 (optional for USB 2.0 type A)
- Audio jack (headphone/microphone combo) x1
- RF pass-through connector x 2 for WLAN, GNSS, WWAN
- 12-pin docking connector x1
- Micro SD slotx 1, Micro SIM slot x 1, Micro HDMI x 1
- DC-in

## Dimensions and Weight

- 28 x 19.5 x 2.3 cm (11" x 7.7" x 0.9")                      ■ 1.33 kg (2.93 lbs)

## Rugged Features

- IP65, MIL-STD-810G, shock & vibration, 5 feet drop

## Environment

- Operating temperature -20°C to 50°C
- Storage temperature -30°C to 70°C
- Humidity 5%~95%

## Certification

- CE, FCC, CB

## Software

- DashON

## IN-box Accessories

- Pen                                      ■ Hand strap                                      ■ Shoulder strap
- Handle                                      ■ Power adapter

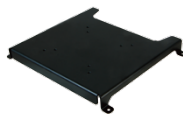
# Peripherals



Vehicle Dock



Desktop Dock



VESA Mount Bracket



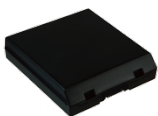
NFC + Smart Card Reader(CAC)



2-bay Battery Charger



4500 mAh Battery



9000 mAh Battery



Vehicle Charger

\* DashON APP : Available to download from RuggON website.  
\* Weight varies with configurations.  
\* ©2017 RuggON Corporation. All rights reserved.  
\* Specifications subject to change without notice.