

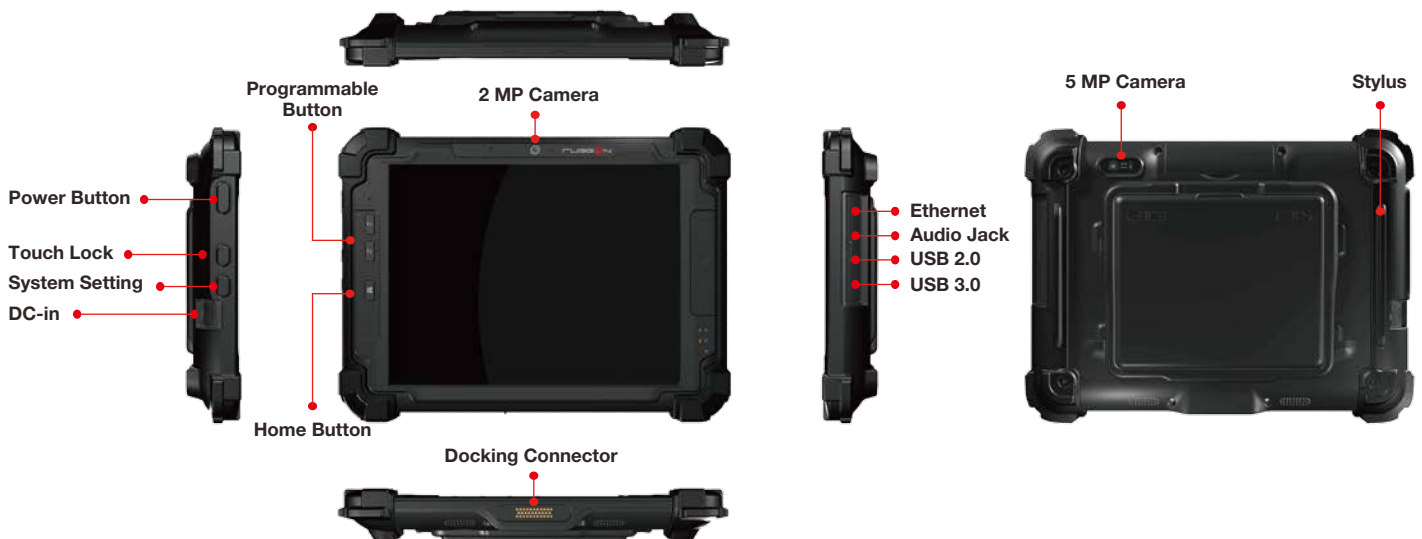
# Blaxtone PM-522

10.4" Fully Rugged  
Windows Tablet



- ◆ Class-leading rugged structure with 6 feet drop resistant
- ◆ 4:3 screen offers large viewing area
- ◆ Capacitive multi-touch, sunlight readable
- ◆ Benefit to maximum uptime with up to 10 hours battery life
- ◆ A number of snap-on modules for data capture

## I/O Diagram



# Specifications

## System

- ◆ Intel® Dual Core Atom® E3827 1.75 GHz
- ◆ 4 GB DDR3L
- ◆ 64 GB mSATA SSD, optional 128 GB / 256 GB
- ◆ Operating system (option) : Windows 10 IoT Enterprise Entry

## Display

- ◆ 10.4" XGA (1024 x 768), 10-point capacitive touch
- ◆ 350 nits, optional 700 nits sunlight readable

## Communication

- ◆ Wi-Fi 802.11 a/b/g/n/ac
- ◆ Bluetooth V4.0 + EDR
- ◆ GNSS (GPS / GLONASS / BeiDou by request)
- ◆ Optional 4G LTE

## Camera

- ◆ 2 megapixels front camera
- ◆ 5 megapixels auto focus rear camera with flash

## Expansion Options

- ◆ Magnetic stripe reader (snap-on)
- ◆ 2D barcode reader (snap-on)
- ◆ Smart card reader-CAC + GNSS (snap-on)

## I/O Interface

- ◆ USB 3.0 x 1 type A, USB 2.0 type A x 1
- ◆ Micro SIM slot x 1
- ◆ Ethernet (via Mini USB to RJ45 adapter) x 1
- ◆ Audio Jack (headphone / microphone combo) x 1
- ◆ 32-pin docking connector x 1
- ◆ Speaker & microphone x 1
- ◆ DC-in x 1

## Function Button

- ◆ Programmable button x 2
- ◆ Power on/off, touch lock, system setting, home button

## Power

- ◆ AC adapter 100V~240V, 50~60Hz input; 19VDC 3.42A, 65W
- ◆ Built-in battery (3800 mAh, 7.4V)
- ◆ Extended hot-swappable battery (4200 mAh, 7.4V)

## Rugged Features

- ◆ IP65 certified
- ◆ MIL-STD-810G certified
  - Vibration test (Truck / Trailer)
  - Functional and crash hazard shock test
  - Transit drop test (6 feet)
  - Low pressure test (Altitude)

## Environmental (Tested to MIL-STD-810G standards)

- ◆ Operating temperature -20°C to +50°C
- ◆ Storage temperature -30°C to +70°C
- ◆ Humidity 5-95%

## Dimensions & Weight

- ◆ 27.5 x 20.4 x 2.7 cm (10.8" x 8" x 1.1") (W x H x D)
- ◆ Starting at 1.3kg (2.87 lbs)

## Security

- ◆ TPM 1.2

## Software

- ◆ DashON

## In-box Accessories

- ◆ Stylus
- ◆ Power adapter

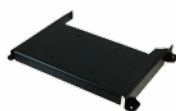
# Accessories



Desktop Dock



Vehicle Dock



VESA Bracket



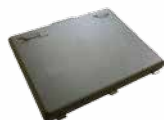
Hand Strap



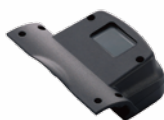
Shoulder Strap



Battery Charger



External Battery



Barcode Reader



Smart Card Reader(CAC)  
+ GNSS



MSR



Ethernet Adapter



Car Adapter

